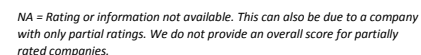


2. If the CSRHub name does not appear in column C, use the CSRHub name lookup tool (top menu, CSRHub...Company) to find the right text to put in column B.
3. Some sheets require selecting a single company to focus on. Mark your focus company with an "X" in column A.
4. Go to the Date Setup and Support tab below to adjust the date, if needed.



[More instructions and examples are available online.](#)

[illegible]

CSRHUB[®] Dashboard

Date Setup and Support Information

Use this password to unlock a sheet and change its formulas. Go to Home/Format/Unprotect to enter the password.

Unlock Password

csrhub

Means you can enter information into this cell

Enter dates in the format "MM/01/YYYY". All data sets are as of the first day of the month.

Your focus date will automatically be set equal to the latest available data date, unless you change it.

Your Focus Date

2015/05

Latest available data date:

5/1/2015

Earliest available data date:

12/1/2008

If you need to set a starting date for a graph or table, put it here.

Start Date for Graph or Table

2013/12

Statistics for the Focus Data Set

Average CSRHub overall rating	56.3
Number of rated companies in the set	15,159
Number of data sources available	369
Number of data sources used this month	162

How to Use a CSRHub Dashboard

[More instructions & examples are available online.](#)

1. Go to File, Options, Formulas and change your calculation options to manual.

This will make it easier for you to get started with the Dashboard.

[See Microsoft's instructions.](#)

2. Enter your CSRHub username and password in the CSRHub Dashboard authorization dialog box.

3. Enter the names or ticker for the company or companies you want to study in the pink cells on the Enter Company Names sheet.

4. Put the date you would like to study into cell B11 on the Date Setup and Support sheet.

5. Enter the date you would like a chart or table to begin by putting a start date in cell B14.

6. Press F9 or "Calculate" in the lower left corner to update the sheet.

7. Review the results of your research in the other tabs in the file.

[See answers to Frequently Asked Questions \(FAQ\) here.](#)

If you experience a technical problem using your Dashboard, please [contact CSRHub support](#). There are known problems with some network firewalls, but we may have a workaround to suggest.

How to Turn Your CSRHub Dashboard Into a PDF File

(Page size and settings have been optimized to print the width of a page in landscape mode.)

Direct Save to PDF From Excel

1. Choose File... Save As from the top menu tab.
2. Select Save as type... and choose PDF.

Printing from Excel to an Adobe PDF

1. Choose File...Print.
2. Choose "Adobe PDF" from the printer dropdown list.
3. Choose your print options from the dropdown list
(one sheet, selected sheets, etc.).
4. Click the "Print" button at the top.

Additional Support Information

CSRHub Dashboard Version	
Created with Version: 2.2	
API code base last updated	8/18/2015
API version number	2.2

See samples of the available CSRHub Dashboards at:
www.csrhub.com/content/csrhub-dashboard-samples/

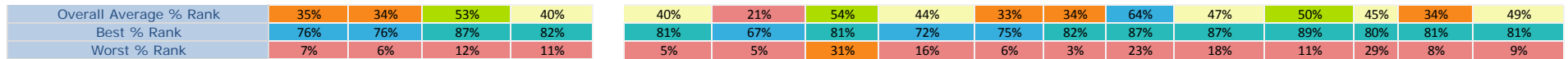
See the latest CSRHub Dashboard support information and instructions at:
www.csrhub.com/content/csrhub-dashboard-instructions/

Ratings run 0-100 with 100 being best.

Percentile ranks are relative to all companies or to those in the named group. Overall Average, Best Score and Worst Score relate to companies on this page only.

Average # of Sources for Overall Average, Best, and Worst Score	39	Overall Average	55	57	56	42%	38%	44%	
	55		Best Score	69	64	57	96%	68%	96%
	12		Worst Score	41	53	54	3%	0%	0%

[illegible]



Company Name (From Enter Company Names Sheet)	Community	Employees	Environment	Governance	Community Dev & Philanthropy	Human Rights & Supply Chain	Product	Compensation & Benefits	Diversity & Labor Rights	Training, Health & Safety	Energy & Climate Change	Environment Policy & Reporting	Resource Management	Board	Leadership Ethics	Transparency & Reporting
Apple Inc.	30%	33%	71%	43%	16%	10%	80%	53%	24%	31%	80%	62%	72%	41%	44%	56%
Google, Inc.	55%	51%	65%	43%	81%	21%	57%	72%	38%	44%	87%	46%	63%	34%	44%	61%
Amazon.com, Inc.	7%	6%	12%	11%	5%	5%	31%	16%	9%	3%	23%	18%	11%	29%	8%	9%
Wal-Mart Stores, Inc.	13%	10%	59%	40%	20%	5%	42%	26%	6%	13%	68%	54%	49%	43%	20%	68%
Alibaba.com Limited	27%	30%	20%	19%	50%	17%	33%	28%	47%	33%	40%	18%	19%	41%	9%	17%
Nokia Corporation	76%	76%	87%	82%	70%	67%	81%	67%	75%	82%	87%	87%	89%	80%	81%	81%

List of Reporting Systems These Companies Use

Company Name	Simple Count	B Corp	CDP 2012	CDP 2013	CDP 2014	CDP Water 2012	CDP Water 2013	EPA GGRT 2011	EPA GGRT 2012	Equator Principles	Global Reporting Initiative 2012	Global Reporting Initiative 2013	Global Reporting Initiative 2014	Green Seal	IIRC Pilot	PERI	SASB Industry Group	UN Global Compact 2012	UN Global Compact 2013	UN Global Compact 2014
Apple Inc.	4	No	Yes	No	Yes	No	No	No	No	No	Yes	Yes	No	No	No	No	No	No	No	No
Google, Inc.	4	No	Yes	Yes	Yes	No	No	No	No	No	No	No	No	No	No	No	Yes	No	No	No
Amazon.com, Inc.	1	No	Yes	No	No	No	No	No	No	No	No	No	No	No	No	No	No	No	No	No
Wal-Mart Stores, Inc.	6	No	Yes	Yes	Yes	No	Yes	No	No	No	Yes	No	Yes	No	No	No	No	No	No	No
Alibaba Com Limited	0	No	No	No	No	No	No	No	No	No	No	No	No	No	No	No	No	No	No	No
Nokia Corporation	9	No	Yes	Yes	Yes	Yes	Yes	No	No	No	Yes	Yes	No	No	No	No	No	Yes	No	Yes

8/20/2015

Other Measures of Social Performance

(CDP Band and GRI Application Level are for the Most Recently Reported Year from 2012-2014)

[illegible]

Membership In Organizations That May Indicate/Require Social Performance

	BCCBC	BICG	BSR	CBSR	CCA	CECP	CEMEFI	Ceres	Climate Registry	EICC	EPEAT	Equator Principles	FLA	Forest Disclosure	FSC	Global Business Coalition	SIPRI	SPC	USCAP	WBCSD	WBENC	WeConnect	WFF
% In This Organization	17%	0%	50%	0%	0%	33%	0%	17%	17%	17%	0%	17%	0%	0%	0%	0%	0%	0%	0%	33%	50%	33%	33%
# In This Organization	1	0	3	0	0	2	0	1	1	1	1	0	1	0	0	0	0	0	0	2	3	2	2

[illegible]

CSRHUB® Dashboard Supply Chain Analysis

Environment, Social, Governance (ESG) Sources Who Collect Information On These Companies

Additional Reports Are Available Via CSRHub From Dark Blue Highlighted ESG Sources

[illegible]

Subscribe at www.csrhub.com for access to the CSRHub Dashboard
 CSRHub Dashboard Supply Chain Analysis - Copyright © 2015 CSRHub
 Dashboard created 2015-08-20

CSRHUB® Dashboard Charts

For a single company rating chart, mark a company on the Enter Company Name Sheet with the number "1"

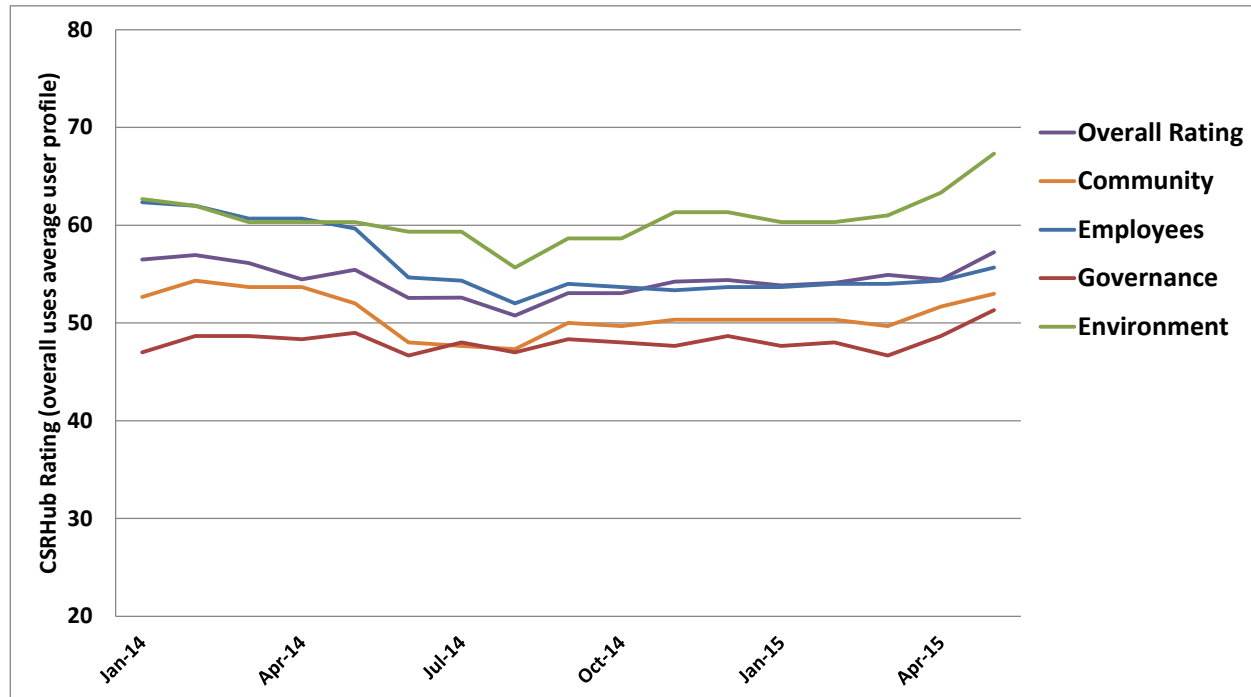
For a five company overall comparison rating chart, mark the five companies to focus on with 1 to 5

For a five company category comparison rating chart, enter the category you want to compare in cell L5

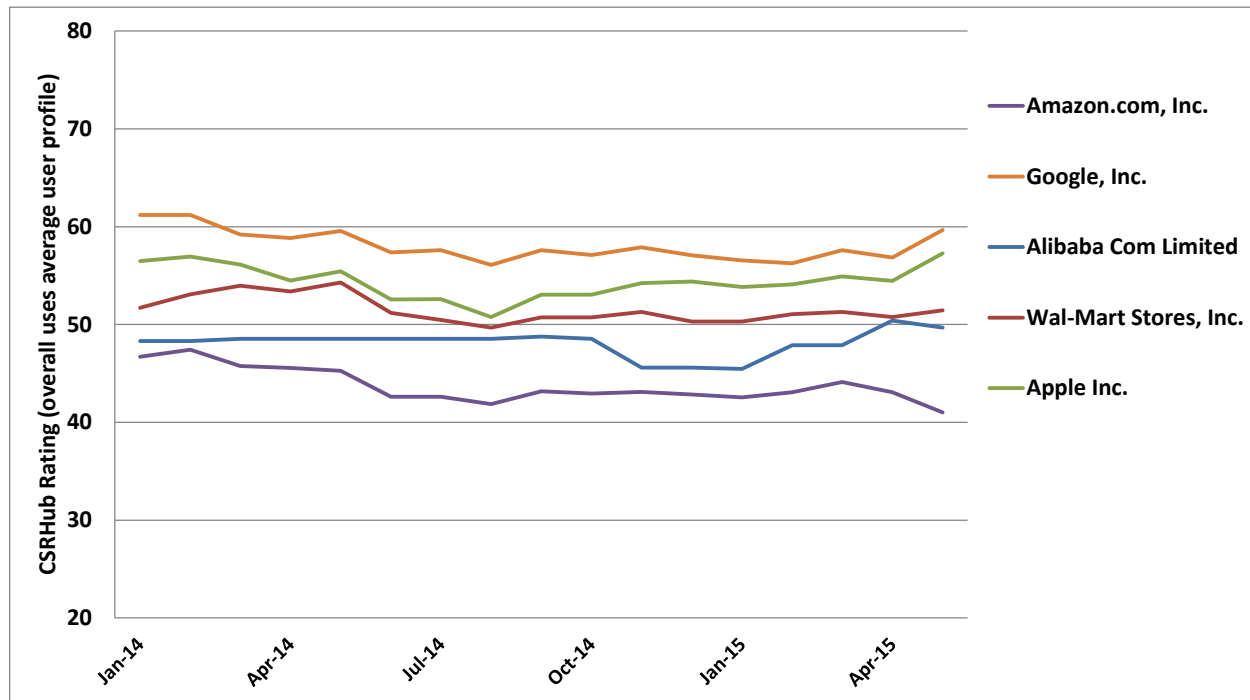
Category:

Community

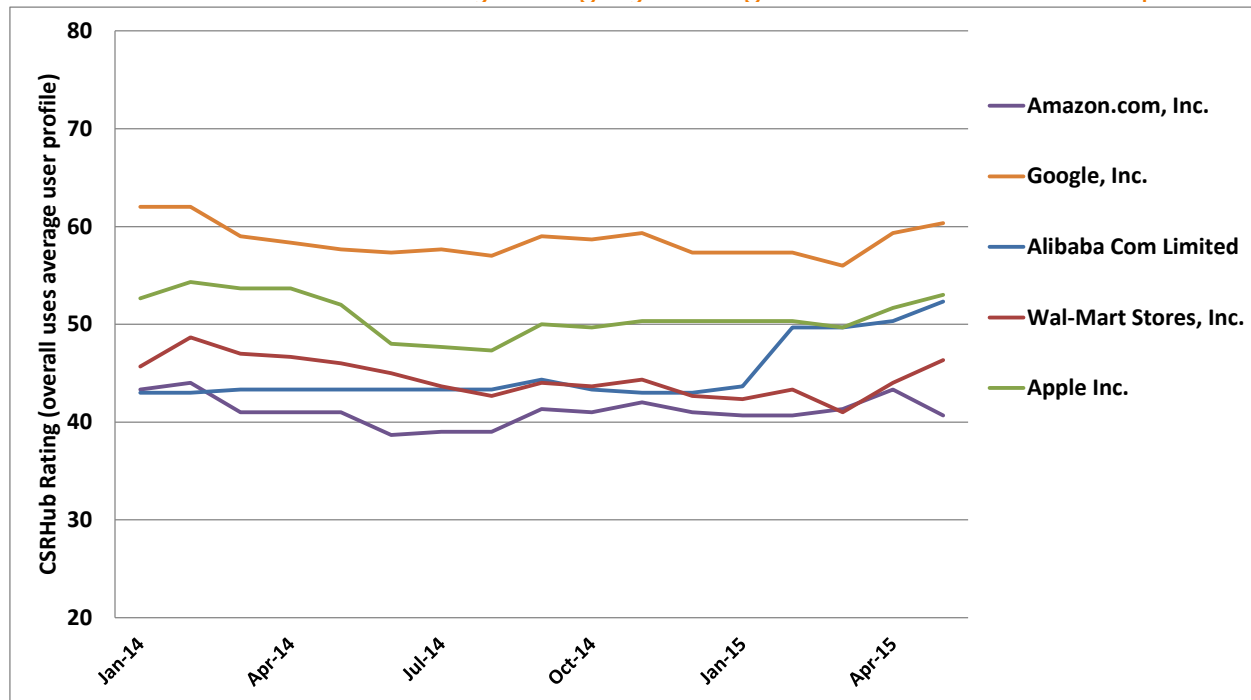
CSRHub Ratings Over Time for Amazon.com, Inc.



CSRHub Ratings Over Time for Five Selected Companies



CSRHUB Community Category Ratings for Five Selected Companies



How to Make a List of Companies

You can generate lists for industry groups, industries, regions, countries, states, cities, specific data sources, or for certain ratings levels. You can also use advanced search on the site to create custom lists.

1. Decide which type of list you want to generate from the set to the right.
2. Put the parameter you want into the middle column. There is a tool on the CSRHub menu (next to View at the top of the Excel screen) that makes it easy to find the available values.
3. Copy the result from the right column and paste it below.
4. Use the Data/Convert text to columns tool to convert the list of company names into a row of company names.
5. Copy the row of company

Type of List	Example/Replace with your choice	Value	Add'l Parm	Results (these are samples and this is the column you copy from)
Industry Group	Media			United Business Media, Inc.;Discovery Communications, Inc.;Astral Media;CBS Corporation;A
Industry	Telecommunications			Premiere Global Services, Inc.;Level 3 Communications, Inc.;Sky Network Television Limited;E
Region	Pacific			Contact Energy Ltd;Leighton Holdings Limited;AXA Asia Pacific Holdings;Sky Network Televisi
Country	Belgium			KBC Bank;UCB SA;Ageas SA/NV;Agfa-Gevaert;Ackermans;Cofinimmo SA;COLRUYT;D'ETEREN
State	UT	USA		Franklin Covey Co.;Nu Skin Enterprises, Inc.;Questar Corporation;Headwaters Incorporated;t
City	NY	USA	New York	NA
Data Source	Global Reporting Initiative 2013			NA
Overall Rating		70	>	Cincinnati Bell Inc.;Portland General Electric Company;Meridian Energy Limited;GPT GROUP;
Category	Employees	72	>=	RSA Insurance Group plc;CARBO Ceramics Inc.;AMN Healthcare Services, Inc.;EnerSys Inc.;Gi
Subcategory	Product	40	<	W. R. Berkley Corporation;Hudson's Bay Company;Ubisoft Entertainment;Hudbay Minerals;\

Put in >,<,>,<=> Put in >,<,>,<=>

Copy your result cell and paste your text below (paste special, values only) (don't worry if it doesn't all fit. Next step will fix this.

United Business Media, Inc.;Discovery Communications, Inc.;Astral Media;CBS Corporation;AUSTAR UNITED COMMUNICATIONS LIMITED;IPG Photonics;FAIRFAX MEDIA LIMITED;PMP LIMITED;SEVEN NETWORK LIMITED;TEN NETWORK HOLDINGS

Copy the text above and paste it into the yellow cell below. Then, do Data/Convert text to columns with a delimiter. Use a semicolon as the delimiter.

Data to Paste Into Start:	United B	Discovery Astral Me CB AUSTAR UNITED (IPG Photonics	FAIRFAX	PMP LIMITED	SEVEN NETWORK LIMITED	TEN NETW
			MEDIA LIMITED			

Highlight the columns from cell B32 to the last complete cell, copy and paste into the orange box in Start Here, using paste special, transpose.