

CSRHUB® Dashboard Starting Point

Enter The Company Or Companies You Want To Study

- 1. Enter a company name, part of a company name, a ticker, or a brand in column B.
- 2. If the CSRHub name does not appear in column C, use the CSRHub name lookup tool (top menu, CSRHub...Company) to find the right text to put in column B.
- 3. Some sheets require selecting a single company to focus on. Mark your focus company with an "X" in column A.
- 4. Go to the Date Setup and Support tab below to adjust the date, if needed.



NA = Rating or information not available. This can also be due to a company with only partial ratings. We do not provide an overall score for partially rated companies.

Top Line Summary	6 Companies	57	Average Overall	More instructions and examples are available online.
------------------	-------------	----	-----------------	--

Ratings Date **2017/06**

To Select for Focus Enter 1-5 (if applicable)	Enter Name, Ticker, or Brand	CSRHub Official Name		Industry	Country
5	Apple Inc.	Apple Inc.	62	Computers & Peripherals	USA
2	Google	Google, Inc.	62	Software & Internet	USA
1	Amazon	Amazon.com, Inc.	45	Electronic Shopping and Mail-Order Houses	USA
4	WMT	Wal-Mart Stores, Inc.	55	Retail	USA
3	Alibaba	Alibaba Com Limited	50	Trading Companies	China
	Nokia	Nokia Corporation	69	Communications Equipment Manufacturing	Finland

CSRHUB[®] Dashboard

Date Setup and Support Information

Use this password to unlock a sheet and change its formulas. Go to Home/Format/Unprotect to enter the password.

Unlock Password **csrhub** Means you can enter information into this cell

Enter dates in the format "MM/01/YYYY". All data sets are as of the first day of the month.

Your focus date will automatically be set equal to the latest available data date, unless you change it.

Your Focus Date **2017/02** Latest available data date: **2/1/2017**
Earliest available data date: **12/1/2008**

If you need to set a starting date for a graph or table, put it here.

Start Date for Graph or Table **2013/12**

Statistics for the Focus Data Set

Average CSRHub overall rating	53.7
Number of rated companies in the set	17,466
Number of data sources available	506
Number of data sources used this month	211

How to Use a CSRHub Dashboard

1. Go to File, Options, Formulas and change your calculation options to manual.
This will make it easier for you to get started with the Dashboard. [See Microsoft's instructions.](#)
2. Enter your CSRHub username and password in the CSRHub Dashboard authorization dialog box.
3. Enter the names or ticker for the company or companies you want to study in the pink cells on the Enter Company Names sheet.
4. Put the date you would like to study into cell B11 on the Date Setup and Support sheet.
5. Enter the date you would like a chart or table to begin by putting a start date in cell B14.
6. Press F9 or "Calculate" in the lower left corner to update the sheet.
7. Review the results of your research in the other tabs in the file.

[See answers to Frequently Asked Questions \(FAQ\) here.](#)

If you experience a technical problem using your Dashboard, please [contact CSRHub support](#). There are known problems with some network firewalls, but we may have a workaround to suggest.

How to Turn Your CSRHub Dashboard Into a PDF File

(Page size and settings have been optimized to print the width of a page in landscape mode.)

Direct Save to PDF From Excel

1. Choose File... Save As from the top menu tab.
2. Select Save as type... and choose PDF.

Printing from Excel to an Adobe PDF

1. Choose File...Print.
2. Choose "Adobe PDF" from the printer dropdown list.
3. Choose your print options from the dropdown list
(one sheet, selected sheets, etc.).
4. Click the "Print" button at the top.

Additional Support Information

CSRHub Dashboard Version

Created with Version: 2.2
API code base last updated
API version number

5/11/2017
2.2

See samples of the available CSRHub Dashboards at:

www.csrhub.com/content/csrhub-dashboard-samples/

See the latest CSRHub Dashboard support information and instructions at:

www.csrhub.com/content/csrhub-dashboard-instructions/

CSRHUB[®] Dashboard Top Level Scores



Overall Information, Including Overall Ratings and Percentile Ranks

Ratings run 0-100 with 100 being best.

Ratings Date **2017/02**

Percentile ranks are relative to all companies or to those in the named group. Overall Average, Best Score and Worst Score relate to companies on this page only.

Average # of Sources for Overall Average, Best, and Worst Score	48	Overall Average	57	54	54	60%	62%	58%	
	64		Best Score	69	61	55	98%	94%	96%
	18		Worst Score	45	52	52	8%	5%	11%

Basic Data

Company Name (From Enter Company Names Sheet)	# of Sources	Country	Primary Industry	Ratings			Percentile Ranks		
				Overall	Country Average	Industry Average	Overall	Vs Country	Vs Industry
Apple Inc.	64	USA	Computers & Peripherals	62	52	54	85%	94%	78%
Google, Inc.	62	USA	Software & Internet	62	52	53	85%	94%	87%
Amazon.com, Inc.	37	USA	Electronic Shopping and Mail-Order Houses	45	52	52	8%	5%	11%
Wal-Mart Stores, Inc.	64	USA	Retail	55	52	53	57%	73%	57%
Alibaba Com Limited	18	China	Trading Companies	50	54	55	28%	21%	21%
Nokia Corporation	40	Finland	Communications Equipment Manufacturing	69	61	54	98%	86%	96%

CSRHUB® Dashboard Supply Chain Analysis

Category and Subcategory Percentile Ranks

Ratings Date **2017/02**



Metric	57%	54%	60%	45%	61%	42%	57%	58%	51%	56%	66%	60%	59%	43%	38%	59%
Overall Average % Rank	57%	54%	60%	45%	61%	42%	57%	58%	51%	56%	66%	60%	59%	43%	38%	59%
Best % Rank	84%	92%	89%	81%	96%	91%	78%	92%	94%	92%	90%	93%	91%	74%	72%	89%
Worst % Rank	17%	18%	11%	5%	23%	8%	30%	26%	10%	15%	18%	20%	7%	13%	13%	3%

Subcategory Percentile Ranks

Company Name (From Enter Company Names Sheet)	Category Percentile Ranks				Community				Employees			Environment			Governance		
	Community	Employees	Environment	Governance	Community Dev & Philanthropy	Human Rights & Supply Chain	Product	Compensation & Benefits	Diversity & Labor Rights	Training, Health & Safety	Energy & Climate Change	Environment Policy & Reporting	Resource Management	Board	Leadership Ethics	Transparency & Reporting	
Apple Inc.	50%	64%	89%	69%	35%	42%	70%	80%	50%	54%	90%	89%	91%	62%	60%	82%	
Google, Inc.	82%	84%	71%	48%	96%	34%	78%	92%	74%	76%	82%	61%	74%	31%	41%	71%	
Amazon.com, Inc.	17%	18%	11%	25%	23%	8%	30%	26%	22%	15%	18%	20%	7%	34%	17%	38%	
Wal-Mart Stores, Inc.	54%	22%	63%	45%	71%	34%	51%	34%	10%	42%	73%	61%	60%	43%	23%	68%	
Alibaba Com Limited	54%	45%	37%	5%	68%	42%	44%	28%	54%	58%	47%	38%	32%	13%	13%	3%	
Nokia Corporation	84%	92%	89%	81%	77%	91%	72%	87%	94%	92%	84%	93%	90%	74%	72%	89%	

CSRHUB[®] Dashboard Charts

For a single company rating chart, mark a company on the Enter Company Name Sheet with the number "1"

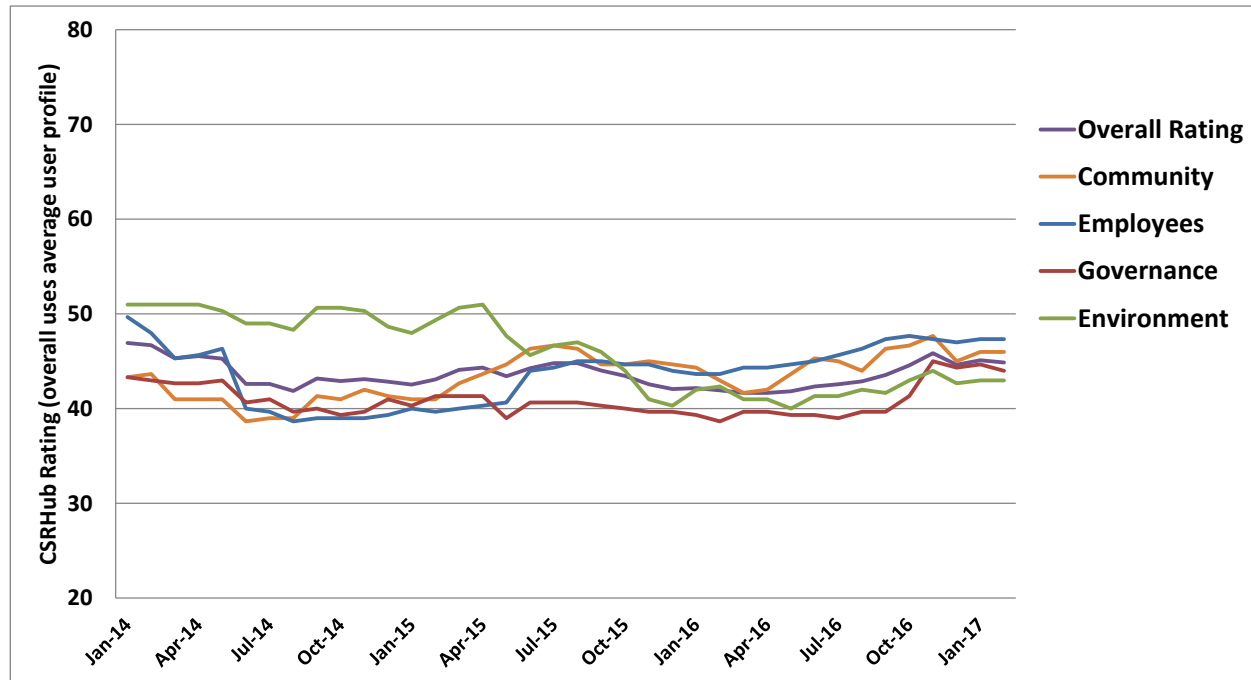
For a five company overall comparison rating chart, mark the five companies to focus on with 1 to 5

For a five company category comparison rating chart, enter the category you want to compare in cell L5

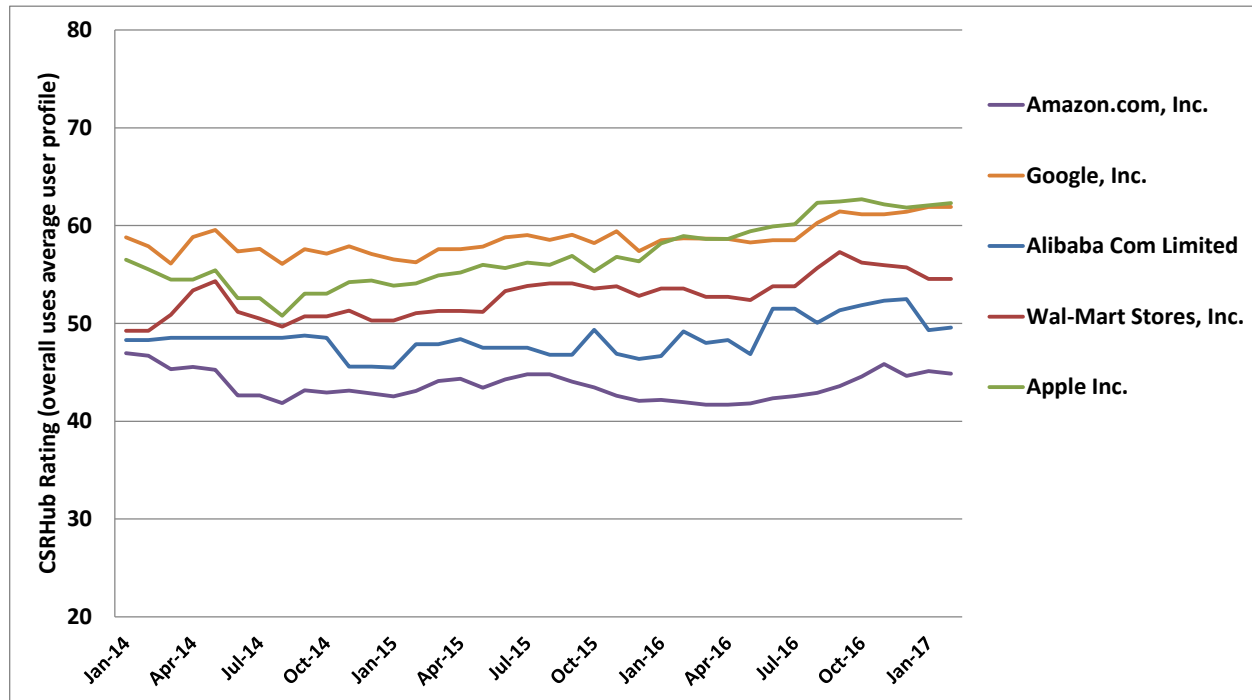
Category:

Community

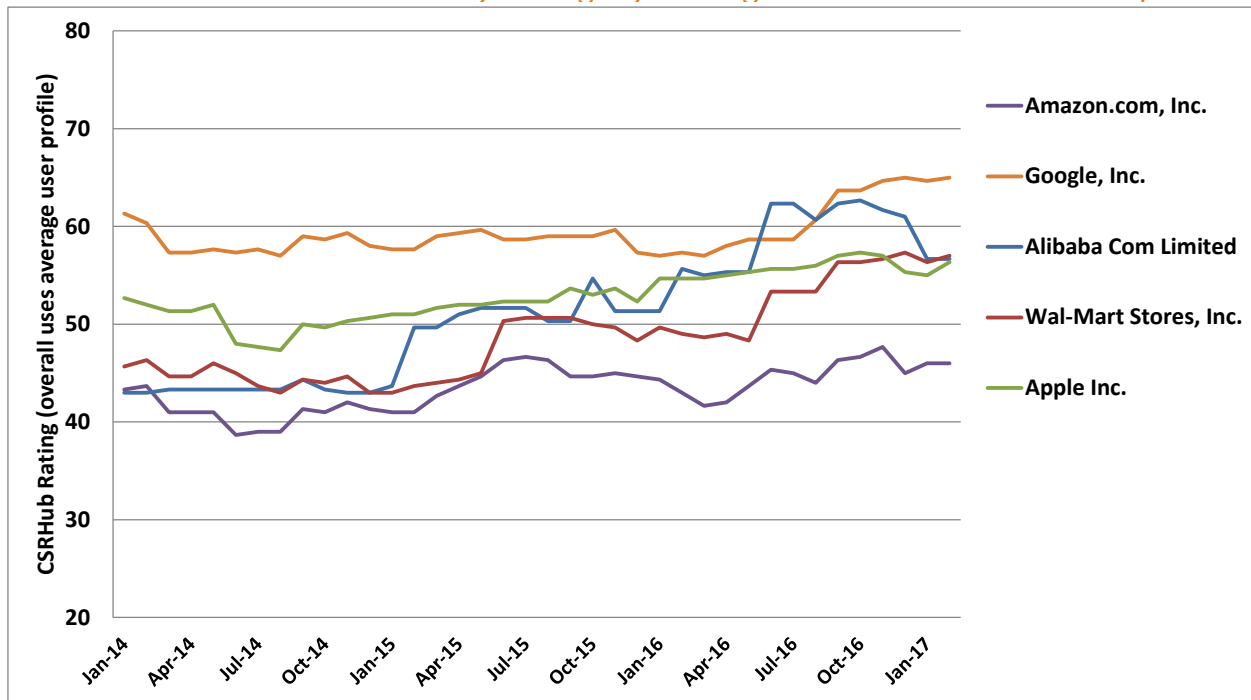
CSRHub Ratings Over Time for Amazon.com, Inc.



CSRHub Ratings Over Time for Five Selected Companies



CSRHub Community Category Ratings for Five Selected Companies



CSRHUB® Dashboard Competitor Benchmark
List of Reporting Systems These Companies Use

	American Chemistry Council	B Corp	CDP 2012	CDP 2013	CDP 2014	CDP 2015	CDP 2016	CDP Forests 2016	CDP Water 2012	CDP Water 2013	CDP Water 2014	CDP Water 2015	CDP Water 2016	Conflict Minerals Filing Report	DOE College Scorecard	EMAS	EPA GGRT 2014	EPA GGRT 2015	EPA Transport Data 2014	EPA Transport Data 2015	Equator Principles	Global Reporting Initiative 2014	Global Reporting Initiative 2015	Global Reporting Initiative 2016	Green Seal	GRESB	
% With This System	0%	0%	83%	50%	67%	67%	67%	0%	17%	33%	33%	0%	0%	33%	0%	0%	0%	0%	17%	17%	0%	50%	50%	50%	0%	0%	
# With This System	0	0	5	3	4	4	4	0	1	2	2	0	0	2	0	0	0	0	1	1	0	3	3	3	0	0	
Company Name	Simple Count	American Chemistry Council	B Corp	CDP 2012	CDP 2013	CDP 2014	CDP 2015	CDP 2016	CDP Forests 2016	CDP Water 2012	CDP Water 2013	CDP Water 2014	CDP Water 2015	CDP Water 2016	Conflict Minerals Filing Report	DOE College Scorecard	EMAS	EPA GGRT 2014	EPA GGRT 2015	EPA Transport Data 2014	EPA Transport Data 2015	Equator Principles	Global Reporting Initiative 2014	Global Reporting Initiative 2015	Global Reporting Initiative 2016	Green Seal	GRESB
Apple Inc.	13	No	No	Yes	No	Yes	Yes	Yes	No	No	No	No	No	No	Yes	No	No	No	No	No	No	Yes	Yes	Yes	No	No	
Google, Inc.	10	No	No	Yes	Yes	Yes	Yes	Yes	No	No	No	No	No	No	No	No	No	No	No	No	No	No	No	No	No	No	
Amazon.com, Inc.	5	No	No	Yes	No	No	No	No	No	No	No	No	No	No	No	No	No	No	No	No	No	No	No	No	No	No	
Wal-Mart Stores, Inc.	16	No	No	Yes	Yes	Yes	Yes	Yes	No	No	Yes	Yes	Yes	No	No	No	No	No	No	Yes	Yes	Yes	Yes	Yes	No	No	
Alibaba Com Limited	2	No	No	No	No	No	No	No	No	No	No	No	No	No	No	No	No	No	No	No	No	No	No	No	No	No	
Nokia Corporation	15	No	No	Yes	Yes	Yes	Yes	Yes	No	Yes	Yes	Yes	No	No	Yes	No	No	No	No	No	No	Yes	Yes	Yes	No	No	

GreenPages	IIRC Pilot	Newsweek Top 500 Global 2015	Newsweek Top 500 Global 2016	Newsweek Top 500 US 2015	Newsweek Top 500 US 2016	PERI	SASB Industry Group	SEBI	Swiss PTR	UN Global Compact 2015	UN Global Compact 2016
17%	0%	100%	100%	67%	67%	0%	17%	0%	0%	17%	0%
1	0	6	6	4	4	0	1	0	0	1	0
GreenPages	IIRC Pilot	Newsweek Top 500 Global 2015	Newsweek Top 500 Global 2016	Newsweek Top 500 US 2015	Newsweek Top 500 US 2016	PERI	SASB Industry Group	SEBI	Swiss PTR	UN Global Compact 2015	UN Global Compact 2016
Yes	No	Yes	Yes	Yes	Yes	No	No	No	No	No	No
No	No	Yes	Yes	Yes	Yes	No	Yes	No	No	No	No
No	No	Yes	Yes	Yes	Yes	No	No	No	No	No	No
No	No	Yes	Yes	Yes	Yes	No	No	No	No	No	No
No	No	Yes	Yes	No	No	No	No	No	No	No	No
No	No	Yes	Yes	No	No	No	No	No	No	Yes	No

CSRHUB® Dashboard Competitor Benchmark

Other Measures of Social Performance

(CDP status GRI Application Level are for the stated periods)

	Brand Finance BSI	CDP 2014-16 Report?	Glassdoor	GRI 2016 Report Type?	Know the Chain	RepRisk	Reputation Quotient	CSR Web Area (Yes/No)
Average for This Measure			3.8			45.8	79.8	
Best Value			4.4			0.0	84.0	
Worst Value			3.2			64.0	69.1	
Company Name	Brand Finance BSI	CDP 2014-16 Report?	Glassdoor	GRI 2016 Report Type?	Know the Chain	RepRisk	Reputation Quotient	CSR Web Area (Yes/No)
Apple Inc.	AAA	Yes	4.0	Non - GRI	Yes	64.0	83.0	Yes
Google, Inc.	AAA+	Yes	4.4	NA		59.0	83.0	Yes
Amazon.com, Inc.	AA+	No	3.5	NA	Yes	62.0	84.0	Yes
Wal-Mart Stores, Inc.	AA	Yes	3.2	RI - Reference	Yes	56.0	69.1	Yes
Alibaba Com Limited	AA+	No	4.0	NA		0.0		Yes
Nokia Corporation	AA	Yes	3.8	GRI - G4		34.0		Yes

CSRHUB[®] Dashboard Competitor Benchmark

Environment, Social, Governance (ESG) Sources Who Collect Information On These Companies

Additional Reports Are Available Via CSRHub From Dark Blue Highlighted ESG Sources

		Asset 4	EIRIS	ET Carbon Rankings	IW Financial	MSCI ESG Carbon Metrics	MSCI ESG Governance Metrics	MSCI ESG Controversies	MSCI ESG Intangible Value Assessment	RepRisk ESG Business Intelligence	Trucost	Vigeo
% With Reports		100%	100%	83%	83%	100%	100%	100%	100%	100%	100%	83%
# With Reports		6	6	5	5	6	6	6	6	6	6	5
Company Name	Simple Count	Asset 4	EIRIS	ET Carbon Rankings	IW Financial	MSCI ESG Carbon Metrics	MSCI ESG Governance Metrics	MSCI ESG Controversies	MSCI ESG Intangible Value Assessment	RepRisk ESG Business Intelligence	Trucost	Vigeo
Apple Inc.	11	Yes	Yes	Yes	Yes	Yes	Yes	Yes	Yes	Yes	Yes	Yes
Google, Inc.	11	Yes	Yes	Yes	Yes	Yes	Yes	Yes	Yes	Yes	Yes	Yes
Amazon.com, Inc.	11	Yes	Yes	Yes	Yes	Yes	Yes	Yes	Yes	Yes	Yes	Yes
Wal-Mart Stores, Inc.	11	Yes	Yes	Yes	Yes	Yes	Yes	Yes	Yes	Yes	Yes	Yes
Alibaba Com Limited	9	Yes	Yes	No	Yes	Yes	Yes	Yes	Yes	Yes	Yes	No
Nokia Corporation	10	Yes	Yes	Yes	No	Yes	Yes	Yes	Yes	Yes	Yes	Yes

How to Make a List of Companies

You can generate lists for industry groups, industries, regions, countries, states, cities, specific data sources, or for certain ratings levels. You can also use advanced search on the site to create custom lists.

1. Decide which type of list you want to generate from the set to the right.
2. Put the parameter you want into the middle column. There is a tool on the CSRHub menu (next to View at the top of the Excel screen) that makes it easy to find the available values.
3. Copy the result from the right column and paste it below.
4. Use the Data/Convert text to columns tool to convert the list of company names into a row of company names.
5. Copy the row of company

Type of List	Example/Replace with your choice	Value	Add'l Parm	Results (these are samples and this is the column you copy from)
Industry Group	Media			United Business Media, Inc.;Discovery Communications, Inc.;CBS Corporation;IPG Photonics;
Industry	Telecommunications			Premiere Global Services, Inc.;Level 3 Communications, Inc.;Sky Network Television Limited;E
Region	Pacific			Contact Energy Ltd;Leighton Holdings Limited;The New Zealand Refining Company Limited;S
Country	Belgium			KBC Bank;UCB SA;Ageas SA/NV;Agfa-Gevaert;Ackermans;Barco New Strip VVPR;CMB SA;Cof
State	UT	USA		Franklin Covey Co.;Boart Longyear Company;Nu Skin Enterprises, Inc.;Questar Corporation;H
City	NY	USA	New York	NA
Data Source	Global Reporting Initiative 2013			NA
Overall Rating		70	>	MULTIPLEX GROUP;STMicroelectronics, Inc.;Nationwide Financial Services, Inc.;AXA;stocklar
Category	Employees	72	>=	The Mosaic Company;Procter & Gamble Company;BNP Paribas;Anworth Mortgage Asset Cor
Subcategory	Product	40	<	Hudson's Bay Company;Ubisoft Entertainment;Hudbay Minerals;Whiting Petroleum Corpora

Put in >,<,>,>=<= Put in >,<,>,>=<=

Copy your result cell and paste your text below (paste special, values only) (don't worry if it doesn't all fit. Next step will fix this.

United Business Media, Inc.;Discovery Communications, Inc.;Astral Media;CBS Corporation;AUSTAR UNITED COMMUNICATIONS LIMITED;IPG Photonics;FAIRFAX MEDIA LIMITED;PMP LIMITED;SEVEN NETWORK LIMITED;TEN NETWORK HOLDINGS

Copy the text above and paste it into the yellow cell below. Then, do Data/Convert text to columns with a delimiter. Use a semicolon as the delimiter.

Data to Paste Into Start:	United B Discovery Astral Me CB AUSTAR UNITED (IPG Photonics	FAIRFAX	PMP LIMITED	SEVEN NETWORK LIMITED	TEN NETW
		MEDIA LIMITED			

Highlight the columns from cell B32 to the last complete cell, copy and paste into the orange box in Start Here, using paste special, transpose.

Extract Data for a List of Companies



1. Enter a company name, or a brand in column B.
2. Use column A to store/record your internal company ID if you have one.
3. If you want to change the fields that will be returned, click on the CSRHub menu tab and the Choose Fields button.
4. Click on the CSRHub menu tab and the "Rebuild Data on This Sheet" button.
5. Enter your CSRHub ID and password. A progress indicator will show that your sheet is pulling data.
6. If a cell in column C has "NA" in it, CSRHub did not match your company name information in column B. Use the CSRHub tab and the Company button to find and paste in the correct company name in column B.
7. Then, rebuild the data on the sheet, again.



[More instructions and examples are available online.](#)

NA = Rating or information not available. This can also be due to a company with only partial ratings. We do not provide an overall score for partially rated companies.

<==ENTER YOUR DATA IN THESE CELLS==>		<==GET RESULTS IN THESE CELLS==>
PUT YOUR INTERNAL COMPANY IDENTIFIER HERE	PUT COMPANY NAME HERE	CSRHub Official Name